



IVI3

TUNING MANUAL

SETTING	8.5	9.5	10.5	12.0	LIE ANGLE	SPIN	FACE ANGLE
	8.5	9.5	10.5	12.0	56.0	±0	Square
	7.75	8.75	9.75	11.25	56.5	-300	2° Open
	7.0	8.0	9.0	10.5	57.25	-500	3° Open
	6.5	7.5	8.5	10.0	58.0	-600	4° Open
	7.0	8.0	9.0	10.5	58.5	-500	3° Open
	7.75	8.75	9.75	11.25	59.25	-300	2° Open
	8.5	9.5	10.5	12.0	60.0	±0	Square
	9.25	10.25	11.25	12.75	59.25	+300	2° Closed
	10.0	11.0	12.0	13.5	58.5	+500	3° Closed
	10.5	11.5	12.5	14.0	58.0	+600	4° Closed
	10.0	11.0	12.0	13.5	57.25	+500	3° Closed
	9.25	10.25	11.25	12.75	56.5	+300	2° Closed

TOUR FIT SYSTEM

M3 utilizes multi-material construction to unlock incredible distance and consistency. While the new Y-Track System provides more customizable adjustability, TaylorMade's new Hammerhead technology also offers increased ball speed and decreased spin on low-face hits. Combined with a thin-face design, M3 provides higher ball speeds across a larger area, resulting in a significantly larger sweet spot. M3 is also equipped with Twist Face technology, which provides more accuracy and straightness on off-center strikes through a revolutionary, reshaped face contour.

LOFT, LIE & FACE ANGLE — LOFT SLEEVE

The 4° Loft Sleeve allows you to adjust the loft, lie and face angle of M3 driver:

- Each of the 12 sleeve movements increases or decreases loft 0.5 – 0.75°
- Each of the 12 sleeve movements increases or decreases lie angle 0.5 – 0.75°
- Each of the 12 sleeve movements increases or decreases face angle 1.0 – 2.0°

ADJUSTING THE M3

Adjusting the M3 family is simple with the TaylorMade torque wrench. Use the wrench to loosen the screw in the center of each weight, then slide the weight to the desired location and lock it in place by tightening the screw until you hear an audible "click" noise from the wrench.

In order to adjust the Loft Sleeve, loosen the screw in the heel until the clubhead releases from the shaft. Align the desired loft as marked on the sleeve with the line on the back of the hosel and tighten the screw until you hear an audible "click" noise.

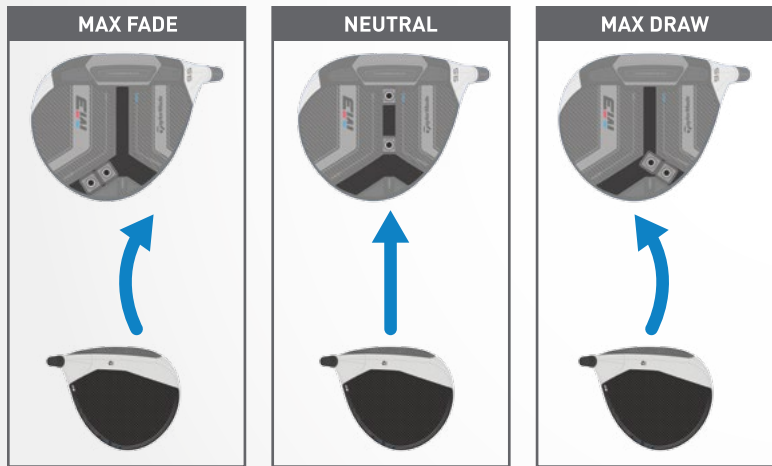


Y-TRACK WEIGHT SYSTEM

The M3 460 and 440 Y-Track Weight System consists of two 11-gram weights, which help to provide a wider range of flight adjustments as well as spin and trajectory control.

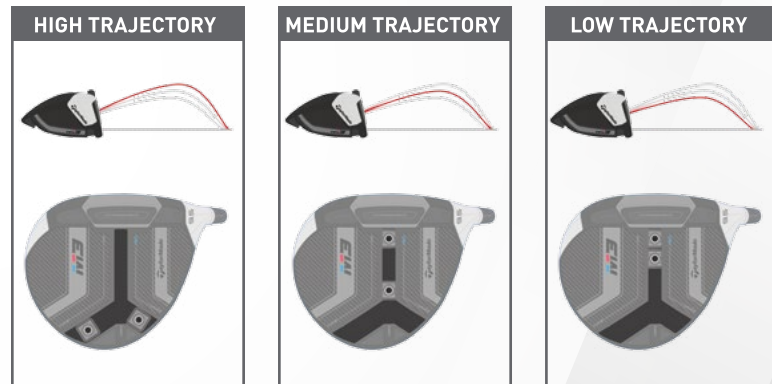
BALL FLIGHT CONTROL

- **MAX FADE** - Position the weight towards the toe
- **NEUTRAL** - Position the weight in the center of the track (split)
- **MAX DRAW** - Position the weight towards the heel



TRAJECTORY CONTROL

- **High Trajectory / Maximum Forgiveness** - Split two weights all the way back of the Y
- **Medium Trajectory** - Move two weights towards the center to provide medium trajectory
- **Low Trajectory** - Move two weights towards the front "LOW" setting to decrease spin & trajectory



Warning: Failure to adjust the club as instructed may result in injury or damage to property.

M3 FAIRWAY

M3 fairway delivers powerful performance that can be easily adjusted for any swing. Featuring a new, repositioned track system with more moveable weight, M3 fairway allows for enhanced personalization and fine-tuned performance. The Loft Sleeve also provides +/- 2 degrees of loft adjustability, so you can completely dial in loft, lie, and trajectory for any golfer.

LOFT, LIE & FACE ANGLE — LOFT SLEEVE

The 4° Loft Sleeve allows you to adjust the loft, lie and face angle of M3 fairway:

- Each of the 12 sleeve movements increases or decreases loft 0.5 – 0.75°
- Each of the 12 sleeve movements increases or decreases lie angle 0.5 – 0.75°
- Each of the 12 sleeve movements increases or decreases face angle 1.0 – 2.0°

BALL FLIGHT — SLIDING WEIGHT SYSTEM

The Sliding Weight System consists of one 29-gram weight to provide a range of draw, neutral and fade ball flights:

- **MAX FADE** - Position the weight towards the toe
- **NEUTRAL** - Position the weight in the center of the track
- **MAX DRAW** - Position the weight towards the heel



M3 RESCUE

The M3 Rescue features a redesigned track system that houses more moveable weight to optimize the settings for the golfer's swing. Combined with a +/- 1.5 degree Loft Sleeve, which allows you to better personalize performance, M3 Rescue can be dialed in for truly versatile shot-making.

LOFT, LIE & FACE ANGLE — LOFT SLEEVE

The 3° Loft Sleeve allows you to adjust the loft, lie and face angle of M3 Rescue:

- Each of the 12 sleeve movements increases or decreases loft 0.50°
- Each of the 12 sleeve movements increases or decreases lie angle 0.50°
- Each of the 12 sleeve movements increases or decreases face angle 1.0°

BALL FLIGHT — SLIDING WEIGHT SYSTEM

The Sliding Weight System consists of one 30-gram weight to provide a range of draw, neutral and fade ball flights:

- **MAX FADE** - Position the weight towards the toe
- **NEUTRAL** - Position the weight in the center of the track
- **MAX DRAW** - Position the weight towards the heel





©2017 Taylor Made Golf Company, Inc.