



Reinvented by the Inventor

FEATURE	BENEFIT
TaylorMade® Flight Control Technology	Adjust the face angle, loft and lie angle to change flight – 8 positions
Compact and pleasing head shape	More versatile, playable and confidence-inspiring
New Low-Friction Sole	Reduces drag and increases playability
Ultra-Thin Wall technology in a steel head	Saved weight from thin walls allows improved weight distribution
Exceptionally low CG	Easier to launch the ball high and long
Aldila Voodoo 85-gram shaft with S-core technology	Promotes a more stable cross-section for increased power and consistency

RESCUE® TP SPECIFICATIONS

Club	Left Handed	Loft (Neutral)	Lie (Neutral)	Head Volume	Club Length	Swing Weight
2		17°	58.0°	117 cc	41"	D3
3	Yes	19°	58.5°	119 cc	40.5"	D3
4	Yes	22°	59.0°	122 cc	40"	D3

RESCUE® TP SHAFT SPECIFICATIONS

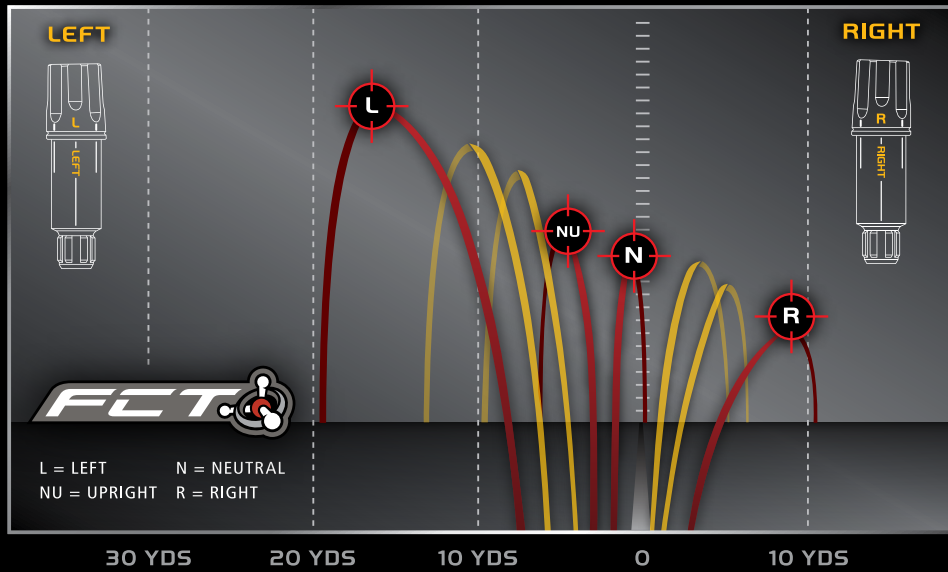
Shaft	Flex	Shaft Torque	Tip Size	Butt Diameter	Shaft Weight	Grip	Grip Weight
Aldila Voodoo VS8	X	1.6"	.355"	.610"	85 g	TM 360	55 g
	S	1.6"	.355"	.610"	84 g	TM 360	55 g
	R	1.7"	.355"	.610"	84 g	TM 360	55 g

* Two custom shafts are offered for the Rescue TP clubs: Fujikura Motore 85 HB and Matrix Ozik Altus Hybrid

WARRANTY INFORMATION

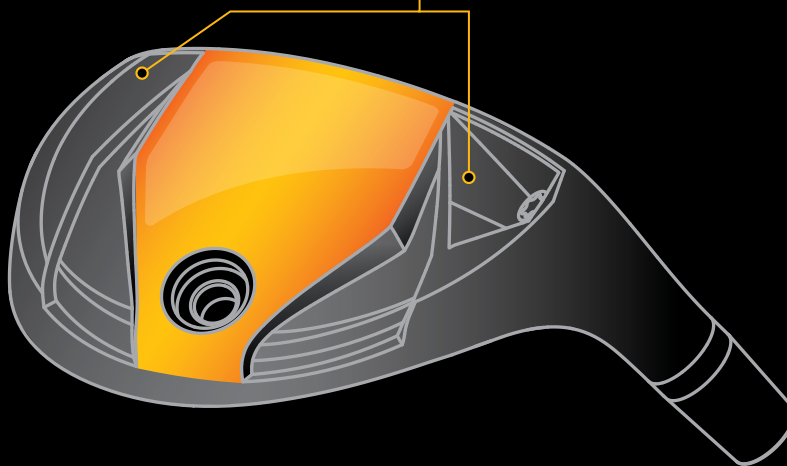
Damage that results from the failure to follow the instructions in the user's manual is not covered under the Limited Consumer Warranty. Visit taylormadegolf.com or see your retailer for a copy of the Limited Consumer Warranty which contains specific limitations.

RESCUE[®] TP 09 FLIGHT CONTROL TECHNOLOGY



RESCUE[®] 09 SOLE

RECESSED HEEL & TOE FOR REDUCED DRAG & MORE PLAYABILITY



WARRANTY INFORMATION

Damage that results from the failure to follow the instructions in the user's manual is not covered under the Limited Consumer Warranty. Visit taylormadegolf.com or see your retailer for a copy of the Limited Consumer Warranty which contains specific limitations.